

# Easy Gift Box



All images © 1990-2017 Stampin' Up!®

## Supplies:

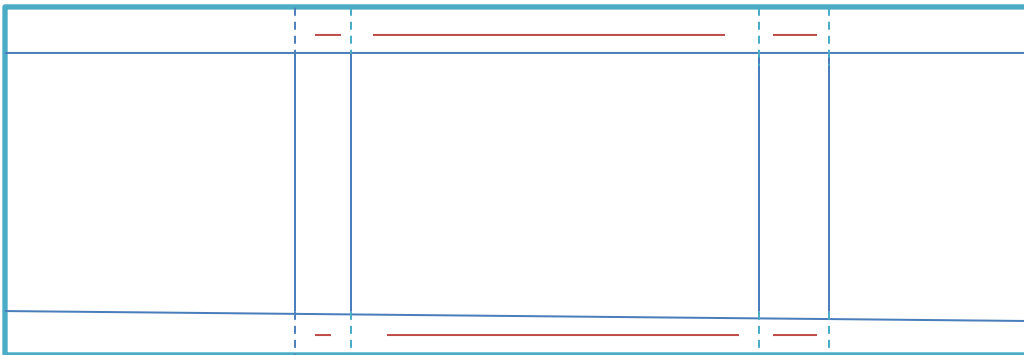
- **Stamp Sets** – Good Morning Magnolia (149298)
- **Card Stock** – Whisper White ( )
- **Stamp Pads** – Tuxedo Black Memento Ink Pad (132708)
- **Misc.** – Magnolia Lane Designer Series Paper (149484), Magnolia Memory Dies (149578), Tear Tape Adhesive (138995), 2 ¼" Circle Punch (143720), 2" Circle Punch (133782), Detailed Trio (1456320), Assorted Blends, Perennial Essence 12" x 12" Vellum Cardstock (149101)
- **Snail Adhesive (104332)**

## Measurements:

- Box Base- 5 ½" x 11"
- Belly Band- 1" x 12"

## Instructions:

1. Cut Designer Series Paper at 5 ½" x 11"
2. Score on the 11" side at 3 ½", 4 ½", 8", and 9"
3. Score on the 5 ½" side at 1 and 4 ½"
4. Cut the score lines on the long side up to the inch line to make the flaps for the box



Score Lines ———  
Cut Line - - - - -

Tear Tape ———

5. On the smaller side of the box lid using the Detailed Trio Punch curve the edges
6. On the front side of the box with the Designer Series Paper pattern that you want to show apply adhesive as shown above
7. Cut belly band and wrap around and adhere together with tear tape.
8. Punch out a 2 ¼" circle punch out in Petal Pink vellum
9. Stamp sentiment in Early Espresso and punch out 2" and adhere to Petal Pink vellum
10. Stamp flower from stamp set in Early Espresso and color with blends after it is dry
11. Cut out flower using dies and adhere to the back of the sentiment
12. Attach sentiment bundle to belly band using dimensionals